



The Rings
by PMR

PMR

Welcome to the developer and creative force behind “The Rings by PMR”. Since 2008, we’ve been dreaming the impossible into being. Having already developed more than 3000000 sq.ft GFA of prime real estate in Europe, “The Rings by PMR” introduces our signature style to Dubai.

PMR vision encompasses the creation of architectural masterpieces that exude sophistication and redefine the standards of ultra-luxury living. To bring these visions to life, PMR has formed a collaboration with the renowned architectural firm Foster + Partners. Moreover, these projects will proudly showcase the artistic brilliance of Mattar Bin Lahej, a prominent Emirati artist, with his notable contributions to the awe-inspiring facade of the Dubai Museum of the Future.

An exceptional waterfront location sets the stage for the first boutique development, nestled in close proximity to prestigious projects such as Four Seasons Residences and Mr. C Residences. “The Rings” project will consist of 8 Sky Mansions and 4 sky palaces, promising unparalleled luxury, 5 Stars amenities, and a new standard of sophistication in ultra high-end real estate.

FOSTER + PARTNERS

Architecture and Design

Foster + Partners, established in 1967 by Sir Norman Foster, is a renowned British architecture firm based in London, England.

They are celebrated for their iconic global projects, encompassing buildings like the Gherkin in London, the Reichstag renovation in Berlin, and the Hong Kong International Airport, demonstrating their proficiency not only in architecture but also interior design and graphics, with a substantial international portfolio of over 75 countries, receiving a multitude of prestigious design awards totaling more than 620.



MATTAR BIN LAHEJ

Artist

Mattar Bin Lahej, a renowned selftaught Emirati artist from Dubai, is the creative force behind the iconic calligraphy adorning the Dubai Museum of the Future.

His unique approach, which integrates Arabic calligraphy into his work, has solidified his position as one of the UAE's most celebrated artists, known for crafting deeply personal and emotionally resonant art that forges profound connections with the audience.



MAIN SUPPLIERS

OBEGI
HOME

antoniolupi

GAGGENAU

Poliform[®]

Rimadesio

The Rings *BY PMR*
Elegance and Luxury on the Waterfront





DUBAI WATER CANAL

This luxurious project graces the vibrant Jumeirah neighborhood, ideally positioned along the scenic Dubai Water Canal.

Enjoy a leisurely walk to the stunning nearby beaches and discover a host of lavish hotels, exquisite dining options, all while being within arm's reach of iconic landmarks like the Burj Khalifa, Dubai mall and Burj Al Arab.



Facing Safa Park



Walking Distance
to Jumeirah Beach



5 Min To DIFC



7 Min To Burj Al Arab



12 Min To Dubai
International Airport

The Rings BY PMR

- Two stand-alone Buildings, each featuring six exclusive units with 5, 6, and 7 bedrooms.
- A total of 8 sky mansion and 4 sky palaces.
- Residence sizes ranging from 9,500 sq. ft. to 19,500 sq. ft.
- Every unit offers breathtaking 180-degree views of Dubai Water Canal, Burj al-Arab, Safa Park, the Dubai skyline, and the iconic Burj Khalifa.
- Private Elevator in each unit, accessible from the dedicated garage and running through the entire living and bedroom areas.
- Spacious interiors with full ceiling height of 3.5m and expansive double-height of 8m living areas.
- Versatile partitions for flexible living spaces.
- Each Residence features its private elevator, private garden, private GYM, Swimming pool, and Cinema room.
- Separate accommodations for Drivers and Maids.
- State-of-the-art Air-Conditioned Private Garages.
- 5-star Services include 24/7 Luxury Concierge, Dedicated Chauffeur Service, Bellboy, and Housekeeping.
- 5-star Amenities encompass a World-Class SPA, Wellness and Beauty Center, Yoga and Gym, Kids' Play Area, Residents' Lounge, and Cigar Lounge.
- Expected delivery in Q4, 2025



EACH UNIT INCLUDES:

- Private Elevator
- Private Gym
- Private Swimming Pool
- Private Cinema
- Private Air Conditioned Garage
- Private Garden



UNIQUE
ELEVATION



IN HARMONY WITH
THE SURROUNDINGS



ARTISTIC ATTENTION
TO DETAILS



A SPECTACULAR ARRIVAL





UNIQUE LIFESTYLE



PRIVATE CLIMATE-
CONTROLLED GARAGES



AUTOMATIC DOORS
WITH REMOTE CONTROL

DOUBLE HEIGHT LIVING





POLIFORM KITCHENS AND
GAGGENAU APPLIANCES

FORMAL DINING





EXTERIOR / INTERIOR
FUSION



PRIVATE SWIMMING POOLS
WITH A STUNNING VIEW

PRIVATE GYMS





PRIVATE CINEMA ROOMS



GUEST SUITE
OVERLOOKING THE CANAL



GUEST SUITE
WITH SKYLINE VIEW

ANTONIO LUPI
BATHROOMS





MASTER SUITE
WIDE VIEW



MASTER BATHROOM
ANTONIO LUPI



POLIFORM
WARDROBES



MASTER SUITE TERRACE
WITH PANORAMIC SIGHTS

MASTER SUITE TERRACE
TO DUBAI SKYLINE VIEW



OUTDOOR DINING EXPERIANCE

at your Terrace



Every residence at The Rings *By PMR* comes fitted with
an Outdoor Grilling Station

LEGEND

5 BEDROOM SKY MANSIONS - STARTING PRICE FROM AED 59 MLN

Lower Floor

- 1- Private Elevator
- 2- Entrance Foyer
- 3- Grand Piano
- 4- Formal Dining
- 5- Show Kitchen
- 6- BOH Kitchen
- 7- Powder Room
- 8- Informal Dining
- 9- Guest Suite 1 or Gym
- 10- Guest Suite 1 Walk in Closet
- 11- Guest Suite 1 Bathroom
- 12- Laundry
- 13- Staff Quarters
- 14- Grand Staircase
- 15- Formal Living
- 16- Formal Dining 2
- 17- Pool
- 18- Outdoor Terrace
- 19- Grill Station
- 20- Outdoor Dining

Upper Floor

- 21- Grand Staircase
- 22- Private Elevator
- 23- Guest Suite 2
- 24- Guest Suite 2 Walk in Closet
- 25- Guest Suite 2 Bathroom
- 26- Void to Formal Living Below
- 27- Guest Suite 3
- 28- Guest Suite 3 Walk in Closet
- 29- Guest Suite 3 Bathroom
- 30- Guest Suite 4
- 31- Guest Suite 4 Walk in Closet
- 32- Guest Suite 4 Bathroom
- 33- Master Suite
- 34- Master Suite Walk in Closet
- 35- Master Suite Bathroom



Burj Khalifa



Water Canal



Suite area Sq/m	Terraces Sq/m	Unite area Sq/m	Store Sq/m	Lift Sq/m	Driver's Suite Sq/m	Private Garage Sq/m (4 parking spaces)	Total area Sq/m	Total area Sq/ft
529	261	790	11	7	9	76	893	9612

LEGEND

6 BEDROOM SKY PALACES STARTING PRICE FROM AED 99 MLN

Lower Floor

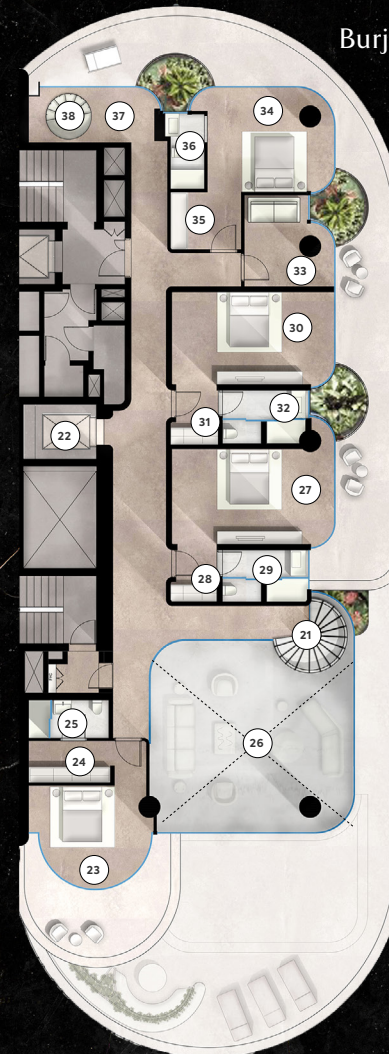
- 1- Private Elevator
- 2- Entrance Foyer
- 3- Grand Piano
- 4- Formal Dining
- 5- Show Kitchen
- 6- BOH Kitchen
- 7- Powder Room
- 8- Informal Dining
- 9- Guest Suite 1 or Gym
- 10- Guest Suite 1 Walk in Closet
- 11- Guest Suite 1 Bathroom
- 12- Laundry
- 13- Staff Quarters
- 14- Grand Staircase
- 15- Formal Living
- 16- Formal Dining 2
- 17- Pool
- 18- Outdoor Terrace
- 19- Grill Station
- 20- Outdoor Dining

Upper Floor

- 21- Grand Staircase
- 22- Private Elevator
- 23- Guest Suite 2
- 24- Guest Suite 2 Walk in Closet
- 25- Guest Suite 2 Bathroom
- 26- Void to Formal Living Below
- 27- Guest Suite 3
- 28- Guest Suite 3 Walk in Closet
- 29- Guest Suite 3 Bathroom
- 30- Guest Suite 4
- 31- Guest Suite 4 Walk in Closet
- 32- Guest Suite 4 Bathroom
- 33- Cinema Room
- 34- Guest Suite 5
- 35- Guest Suite 5 Walk in Closet
- 36- Guest Suite 5 Bathroom
- 37- Office
- 38- Staircase

Master Suite Level

- 39- Private Elevator
- 40- Outdoor Terrace
- 41- Top Roof Pool
- 42- Master Suite
- 43- Master Suite Walk in Closet
- 44- Master Suite Bathroom
- 45- Staircase
- 46- Jacuzzi



Burj Khalifa



Water Canal

Suite area Sq/m	Terraces Sq/m	Unite area Sq/m	Store Sq/m	Lift Sq/m	Driver's Suite Sq/m	Private Garage Sq/m (5 parking spaces)	Total area Sq/m	Total area Sq/ft
642	626	1268	11	7	8	111	1405	15123

LEGEND

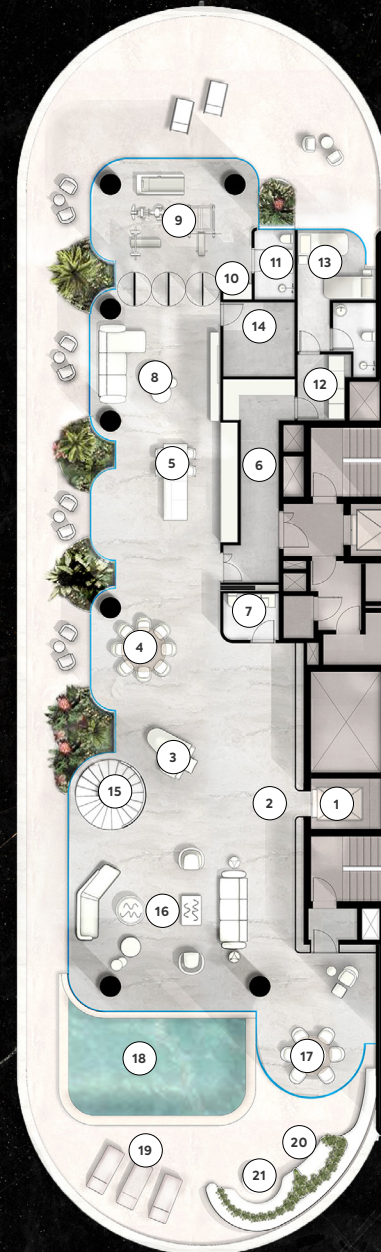
6 BEDROOM SKY MANSIONS – STARTING PRICE FROM AED 69 MLN

Lower Floor

- 1- Private Elevator
- 2- Entrance Foyer
- 3- Grand Piano
- 4- Formal Dining
- 5- Show Kitchen
- 6- BOH Kitchen
- 7- Powder Room
- 8- Informal Dining
- 9- Guest Suite 1 or Gym
- 10- Guest Suite 1 Walk in Closet
- 11- Guest Suite 1 Bathroom
- 12- Laundry
- 13- Staff Quarters
- 14- Cinema Room
- 15- Grand Staircase
- 16- Formal Living
- 17- Formal Dining 2
- 18- Pool
- 19- Outdoor Terrace
- 20- Grill Station
- 21- Outdoor Dining

Upper Floor

- 22- Grand Staircase
- 23- Private Elevator
- 24- Guest Suite 2
- 25- Guest Suite 2 Walk in Closet
- 26- Guest Suite 2 Bathroom
- 27- Void to Formal Living Below
- 28- Guest Suite 3
- 29- Guest Suite 3 Walk in Closet
- 30- Guest Suite 3 Bathroom
- 31- Guest Suite 4
- 32- Guest Suite 4 Walk in Closet
- 33- Guest Suite 4 Bathroom
- 34- Guest Suite 5
- 35- Guest Suite 5 Walk in Closet
- 36- Guest Suite 5 Bathroom
- 37- Master Suite
- 38- Master Suite Walk in Closet
- 39- Master Suite Bathroom
- 40- Outdoor Terrace



Burj Khalifa

Water Canal



Suite area Sq/m	Terraces Sq/m	Unite area Sq/m	Store Sq/m	Lift Sq/m	Driver's Suite Sq/m	Private Garage Sq/m (5 parking spaces)	Total area Sq/m	Total area Sq/ft
625	425	1050	12	7	9	90	1168	12572

LEGEND

7 BEDROOM SKY PALACES PRICE UPON REQUEST

Lower Floor

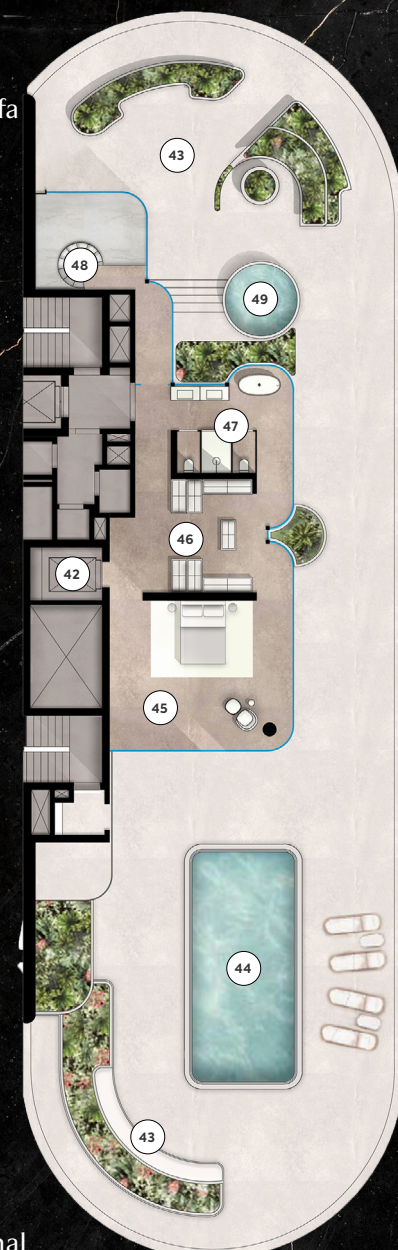
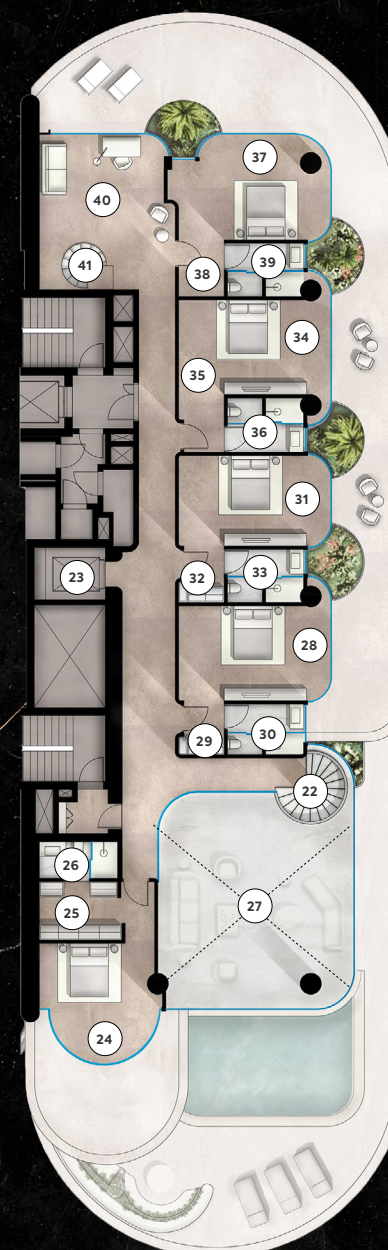
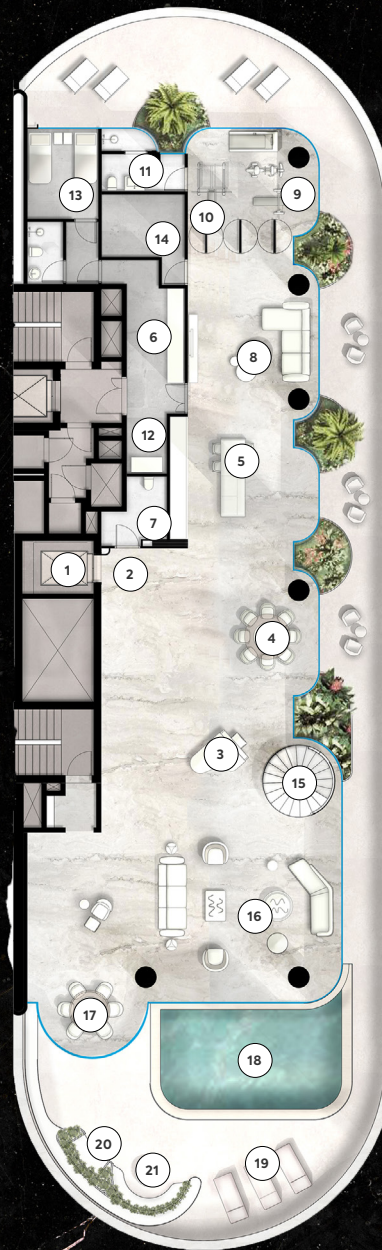
- 1- Private Elevator
- 2- Entrance Foyer
- 3- Grand Piano
- 4- Formal Dining
- 5- Show Kitchen
- 6- BOH Kitchen
- 7- Powder Room
- 8- Informal Dining
- 9- Guest Suite 1 or Gym
- 10- Guest Suite 1 Walk in Closet
- 11- Guest Suite 1 Bathroom
- 12- Laundry
- 13- Staff Quarters
- 14- Cinema Room
- 15- Grand Staircase
- 16- Formal Living
- 17- Formal Dining 2
- 18- Pool
- 19- Outdoor Terrace
- 20- Grill Station
- 21- Outdoor Dining

Master Suite Level

- 42- Private Elevator
- 43- Outdoor Terrace
- 44- Top Roof Pool
- 45- Master Suite
- 46- Master Suite Walking in Closet
- 47- Master Suite Bathroom
- 48- Staircase
- 49- Jacuzzi

Upper Floor

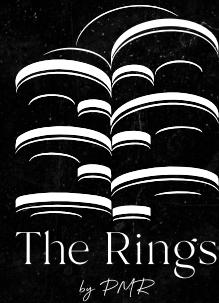
- 22- Grand Staircase
- 23- Private Elevator
- 24- Guest Suite 2
- 25- Guest Suite 2 Walk in Closet
- 26- Guest Suite 2 Bathroom
- 27- Void to Formal Living Below
- 28- Guest Suite 3
- 29- Guest Suite 3 Walk in Closet
- 30- Guest Suite 3 Bathroom
- 31- Guest Suite 4
- 32- Guest Suite 4 Walk in Closet
- 33- Guest Suite 4 Bathroom
- 34- Guest Suite 5
- 35- Guest Suite 5 Walk in Closet
- 36- Guest Suite 5 Bathroom
- 37- Guest Suite 6
- 38- Guest Suite 6 Walk in Closet
- 39- Guest Suite 6 Bathroom
- 40- Office
- 41- Staircase



Burj Khalifa

Water Canal

Suite area Sq/m	Terraces Sq/m	Unite area Sq/m	Store Sq/m	Lift Sq/m	Driver's Suite Sq/m	Private Garage Sq/m (7 parking spaces)	Total area Sq/m	Total area Sq/ft
764	828	1592	17	7	9	158	1783	19192



PAYMENT PLAN

INSTALLMENT NO.	PAYMENT MILESTONE	PAYMENT (%)
1st Installment	Booking Amount	5 %
2nd Installment	SPA (7 days from booking)	10 % + 4% DLD
3rd Installment	Within 30 days from signing the SPA	10 %
4th Installment	Within 3 months from signing the SPA	5 %
5th Installment	Within 6 months from signing the SPA	5 %
6th Installment	Within 9 months from signing the SPA	5 %
7th Installment	Within 12 months from signing the SPA	5 %
8th Installment	Within 15 months from signing the SPA	5 %
9th Installment	Within 18 months from signing the SPA	5 %
10th Installment	Within 21 months from signing the SPA	5 %
11th Installment	Completion	40 %



5 STAR AMENITIES

- World-Class SPA
- Wellness and Beauty Center
- Yoga and Gym
- Kids' Play Area
- Residents' Lounge
- Cigar Lounge

5 STAR SERVICES



24/7 Luxury Concierge



Dedicated Chauffeur Service



Bellboy



House Keeping



The Rings
by PMR